

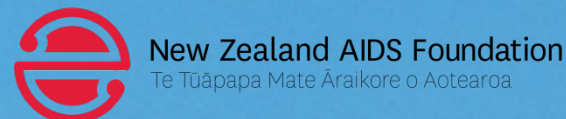
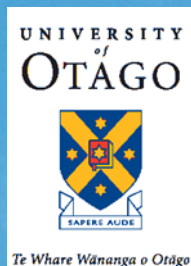
# Trends in sexual behaviour, condom use and HIV testing among New Zealand gay and bisexual men recruited offline and online 2002-2011

Peter Saxton<sup>1,3</sup>, Nigel Dickson<sup>1</sup>, Tony Hughes<sup>2</sup>, Adrian Ludlam<sup>1,3</sup>

<sup>1</sup> AIDS Epidemiology Group, University of Otago

<sup>2</sup> NZ AIDS Foundation

<sup>3</sup> Dept of Social and Community Health, University of Auckland



## Epidemiological surveillance

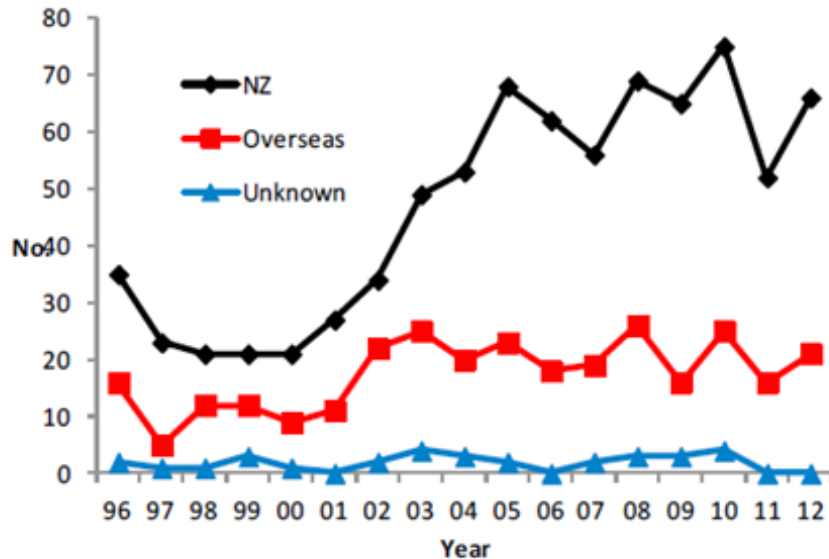


Figure 2 Place of infection of MSM diagnosed by antibody test and reported by viral load since 2002 whose place of diagnosis was New Zealand

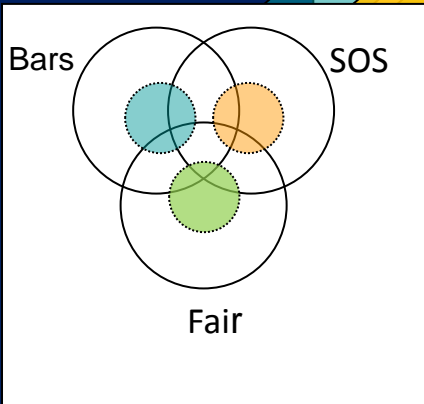
## Behavioural surveillance

- **Explain** patterns in new HIV diagnoses
- **Evaluate** HIV prevention and testing interventions
- **Forewarn** of emerging risks

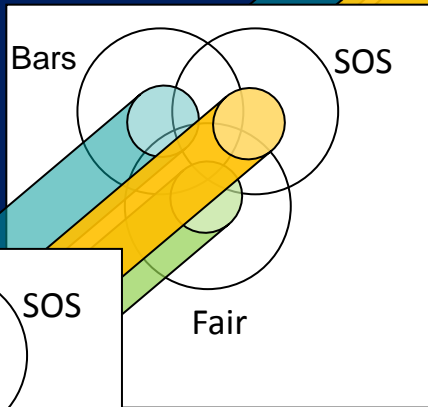
# Gay Auckland Periodic Sex Survey (GAPSS)

Recruitment at Big Gay Out, then bars and sex-on-site (SOS) venues simultaneously over subsequent week

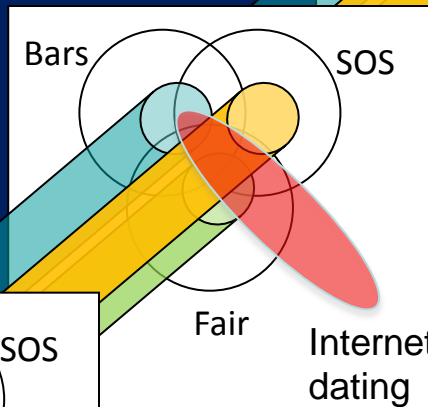
2002  
n=812



2004  
n=1220



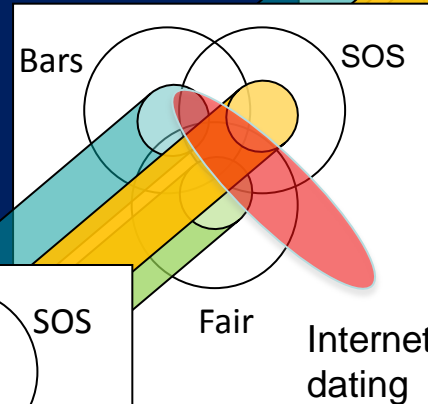
2006  
n=1228



2006  
N=2141



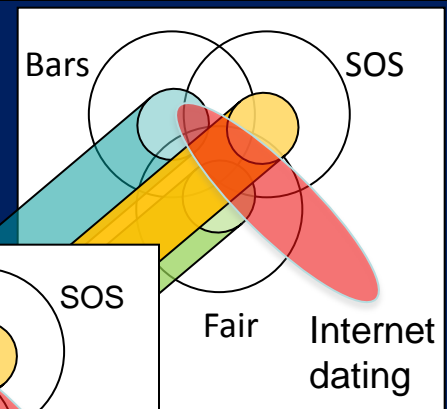
2008  
n=1527



2008  
n=1477



2011  
n=1320



2011  
N=1917

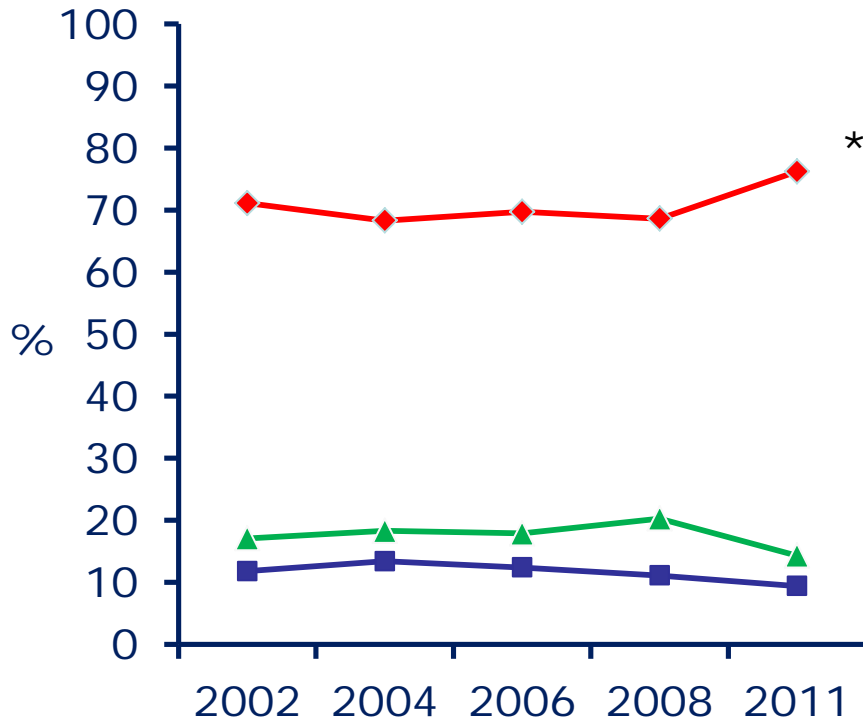
## Gay men's Online Sex Survey (GOSS)

Recruitment begins at conclusion of GAPSS on Internet dating sites. Eligibility restricted to MSM who had not already completed GAPSS that year

# Sources of recruitment

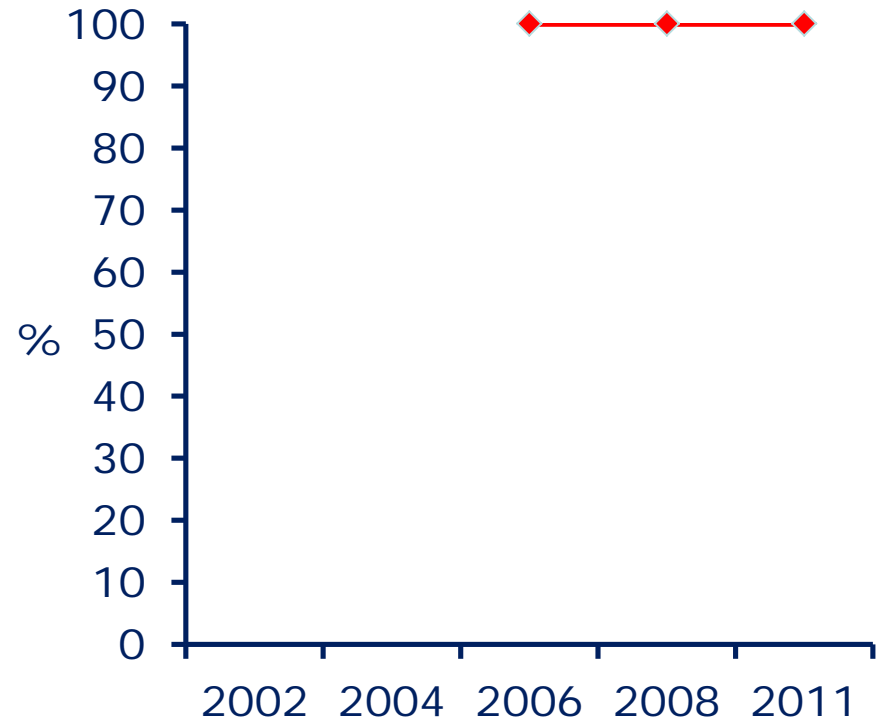
\* P<0.001

## GAPSS



- ◆ Big Gay Out
- Gay bars
- ▲ Sex-on-site venues

## GOSS

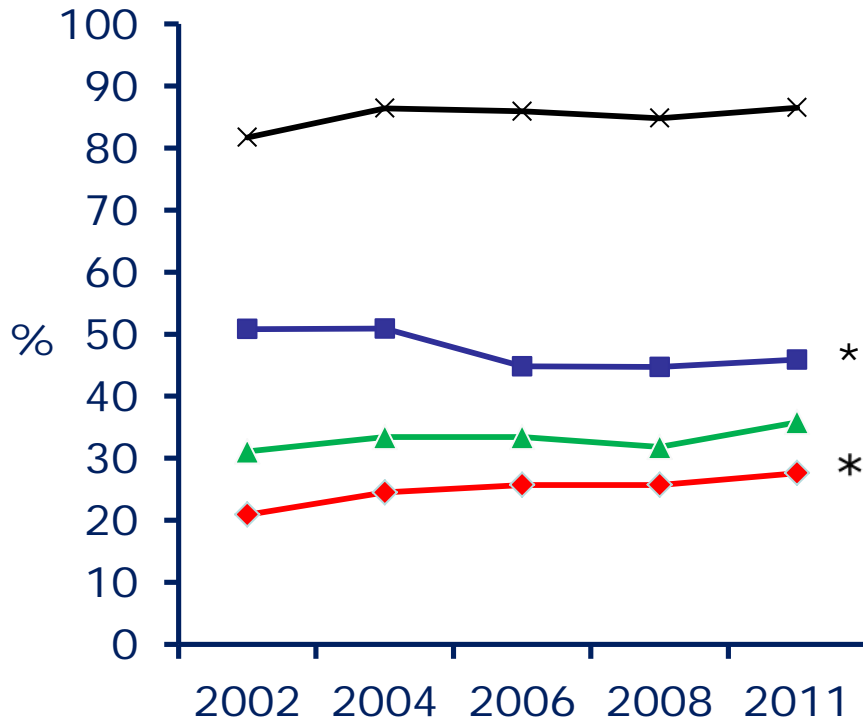


- ◆ NZ Dating.com (Auckland)

# Participant characteristics

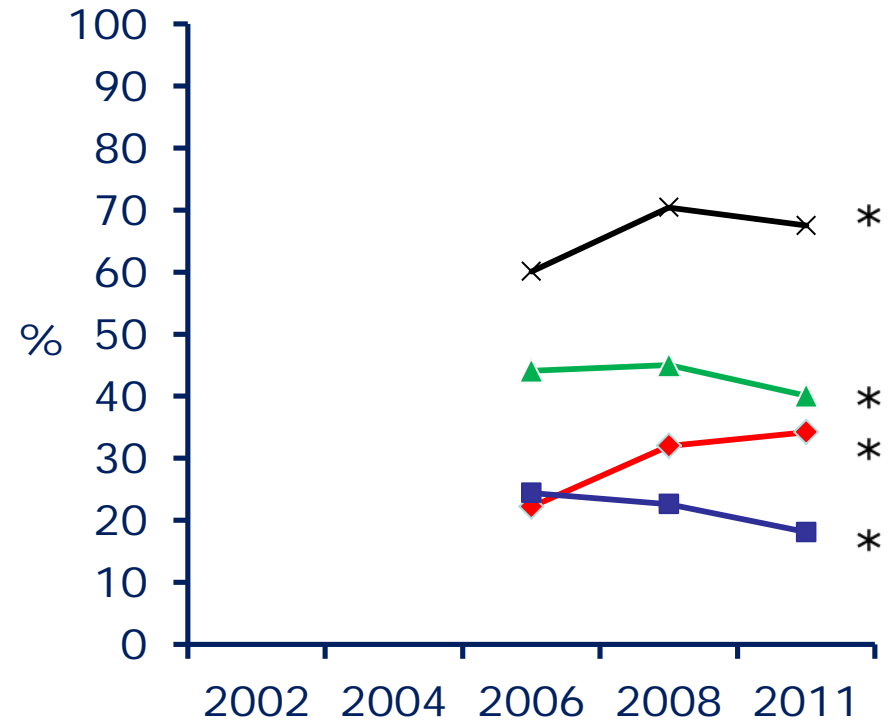
\* P<0.001

## GAPSS



- ◆ non-European
- Spend a lot of free time with gay men
- ▲ Aged under 30
- × Gay identified

## GOSS

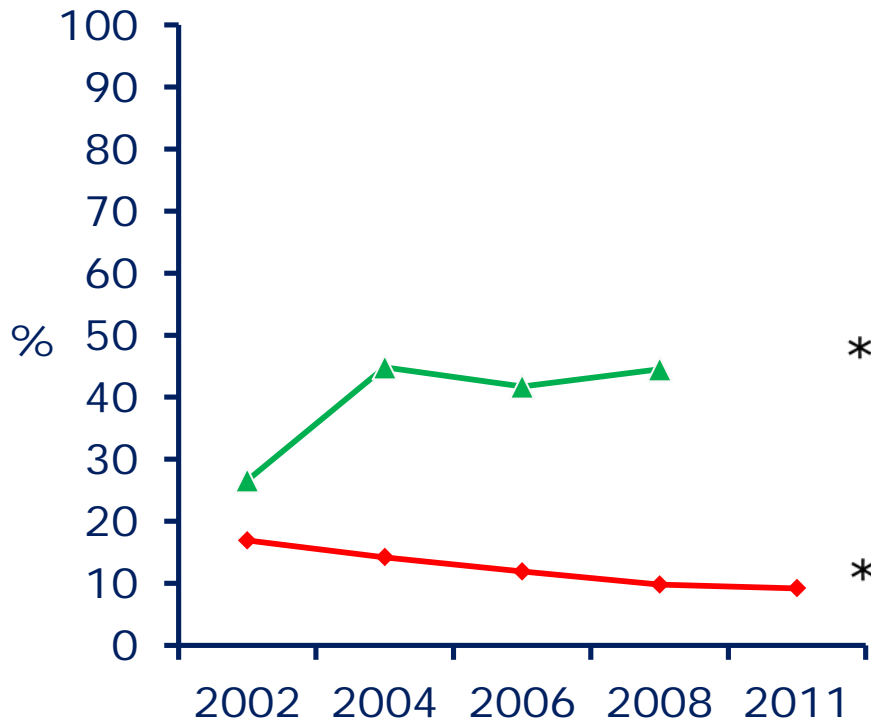


- ◆ non-European
- Spend a lot of free time with gay men
- ▲ Aged under 30
- × Gay identified

# Sexual partner acquisition

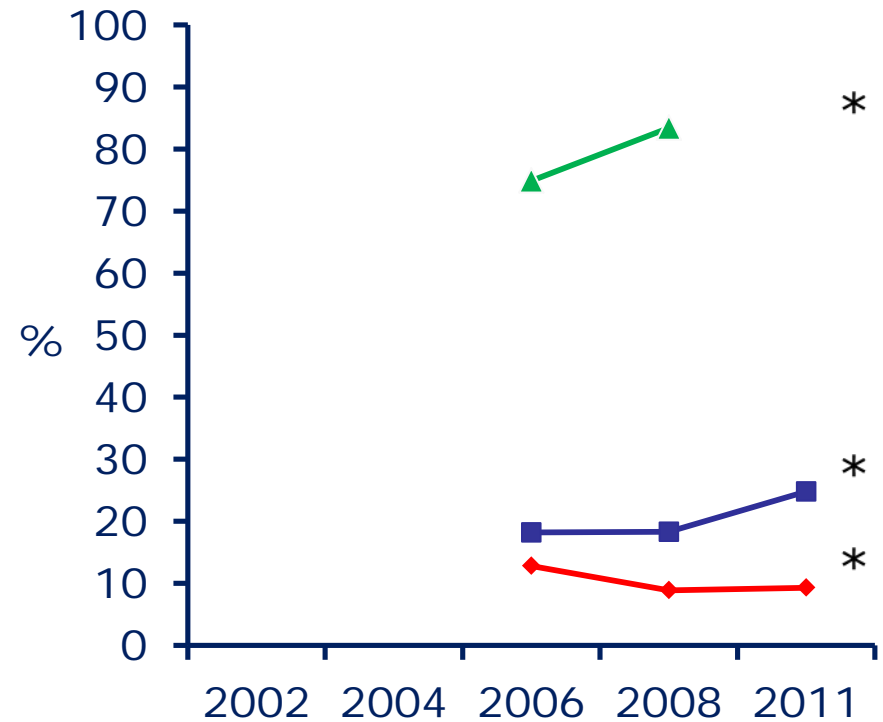
\* P<0.05

## GAPSS



▲ Sex with a man met online  
◆ >20 male partners

## GOSS

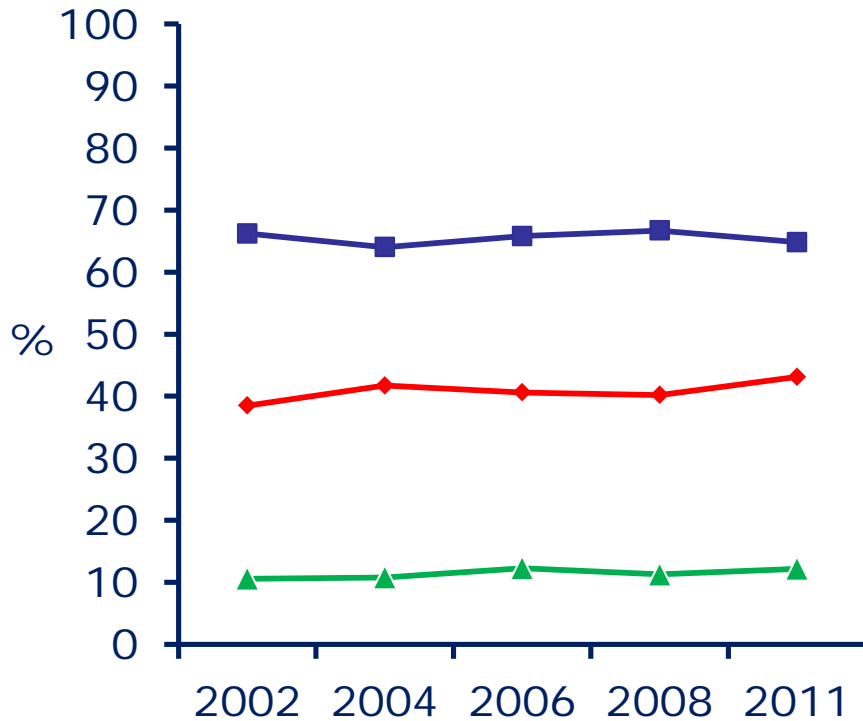


■ Go online > once a day to check profile  
▲ Sex with a man met online  
◆ >20 male partners

# Partner types <6 months

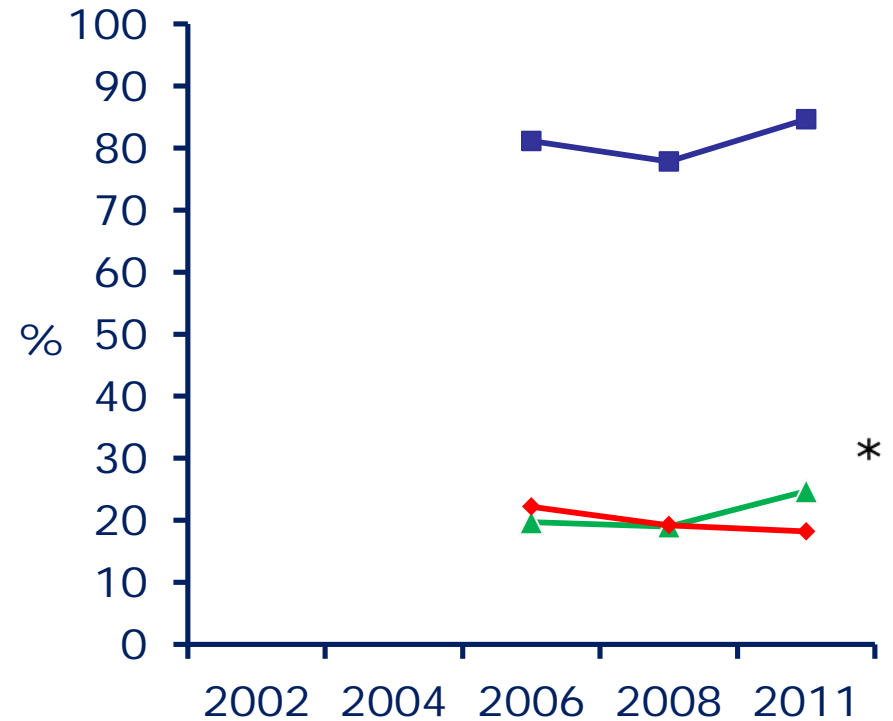
\* P<0.05

## GAPSS



■ Casual  
▲ Fuckbuddy  
◆ Boyfriend

## GOSS

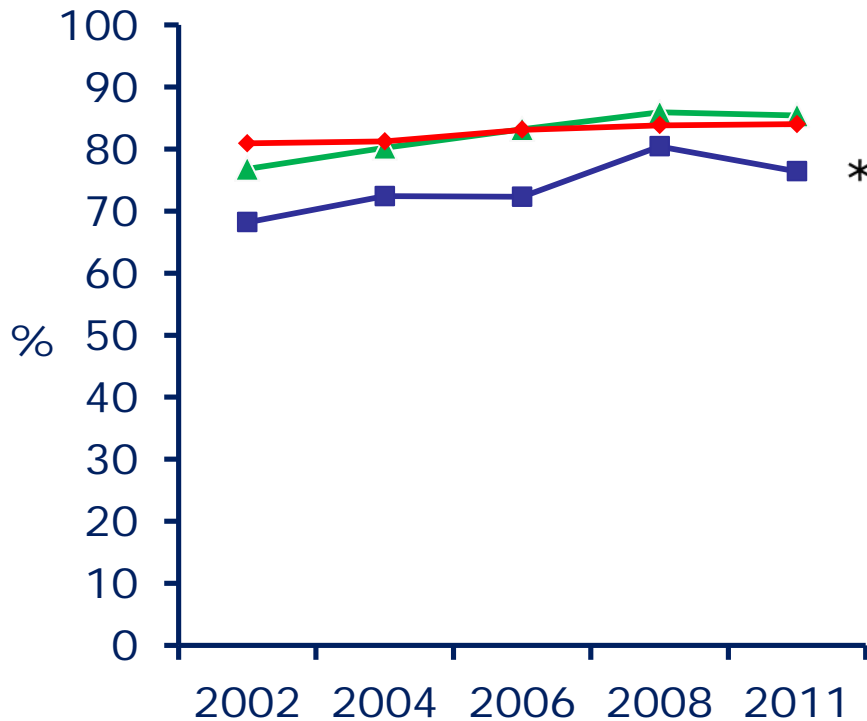


■ Casual  
▲ Fuckbuddy  
◆ Boyfriend

# Anal intercourse <6 months

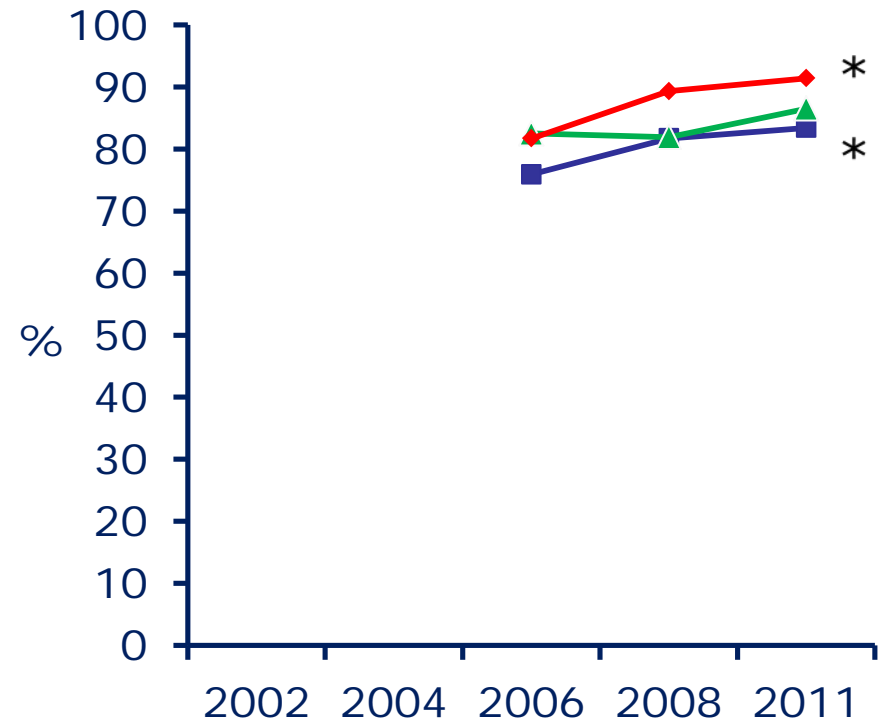
\* P<0.05

## GAPSS



- With casual partner/s
- ▲ With current fuckbuddy
- ◆ With current boyfriend

## GOSS

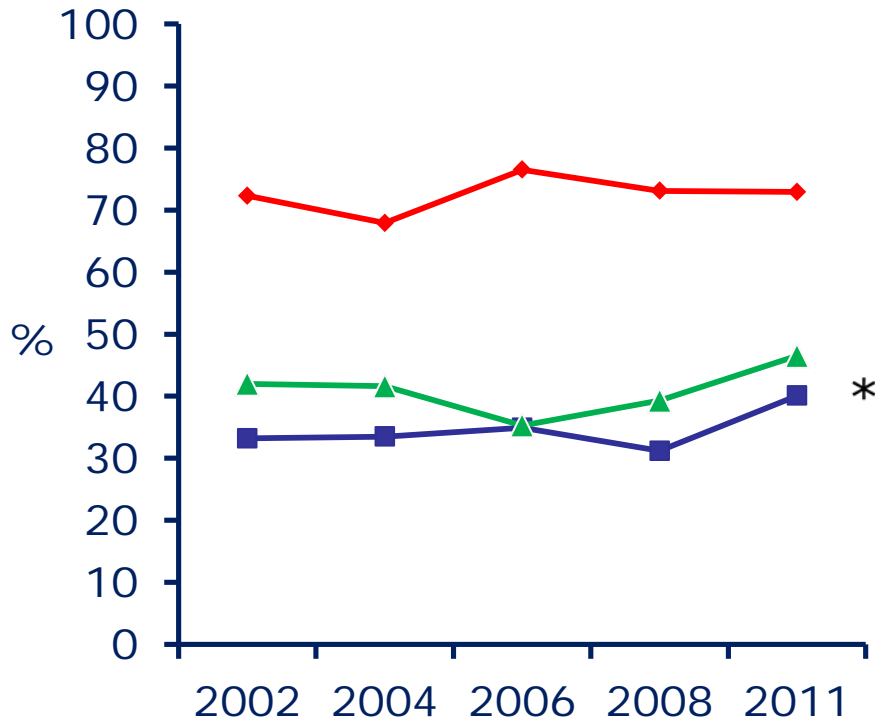


- With casual partner/s
- ▲ With current fuckbuddy
- ◆ With current boyfriend



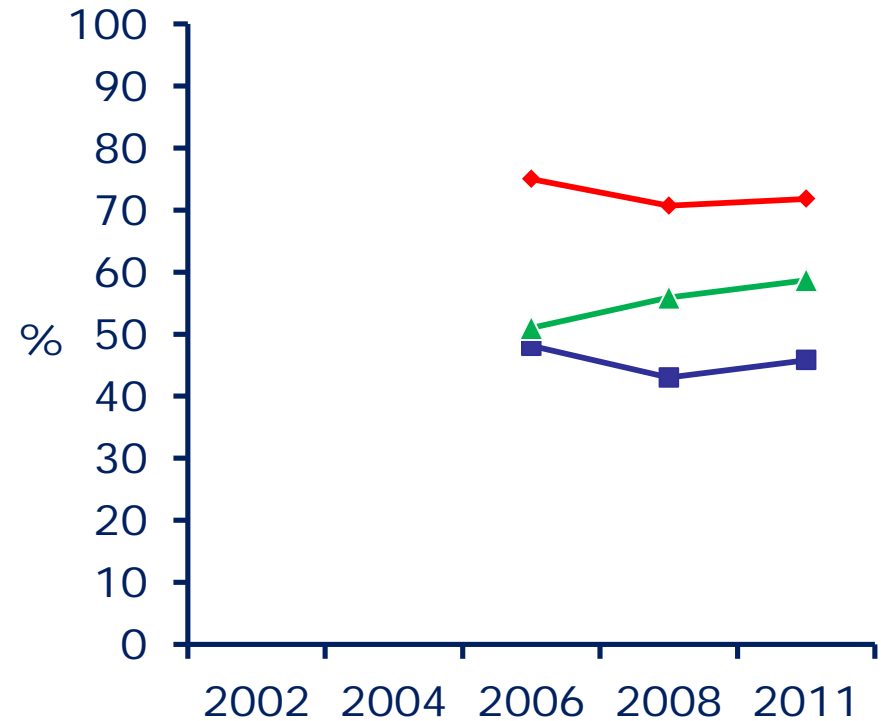
# Any unprotected sex < 6 months \* P=0.05

## GAPSS



- During AI with casual partner/s
- ▲ During AI with current fuckbuddy
- ◆ During AI with current boyfriend

## GOSS

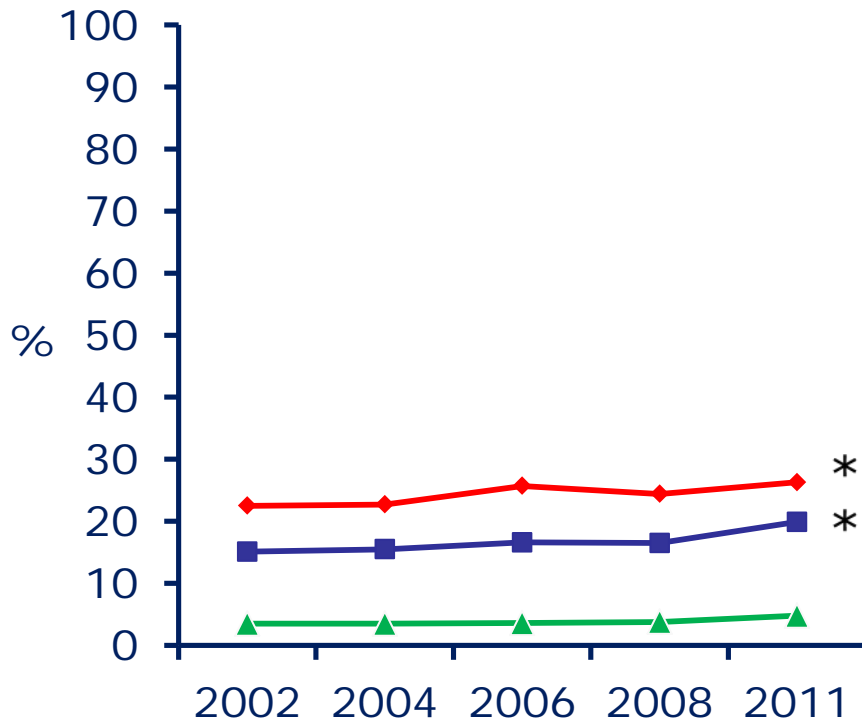


- During AI with casual partner/s
- ▲ During AI with current fuckbuddy
- ◆ During AI with current boyfriend

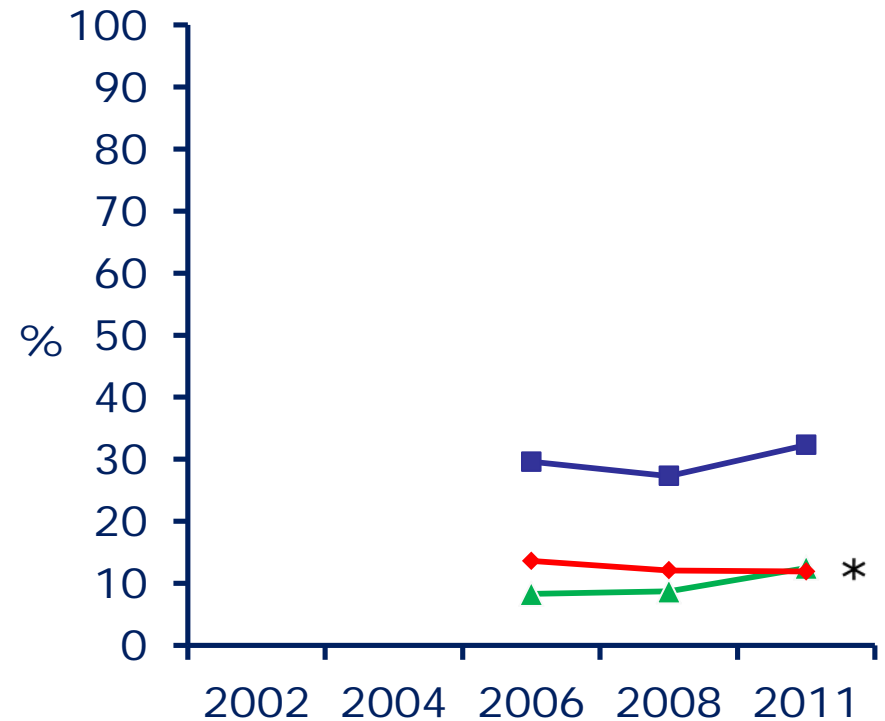
# Overall any unprotected sex <6 months

\* P<0.05

**GAPSS**



**GOSS**



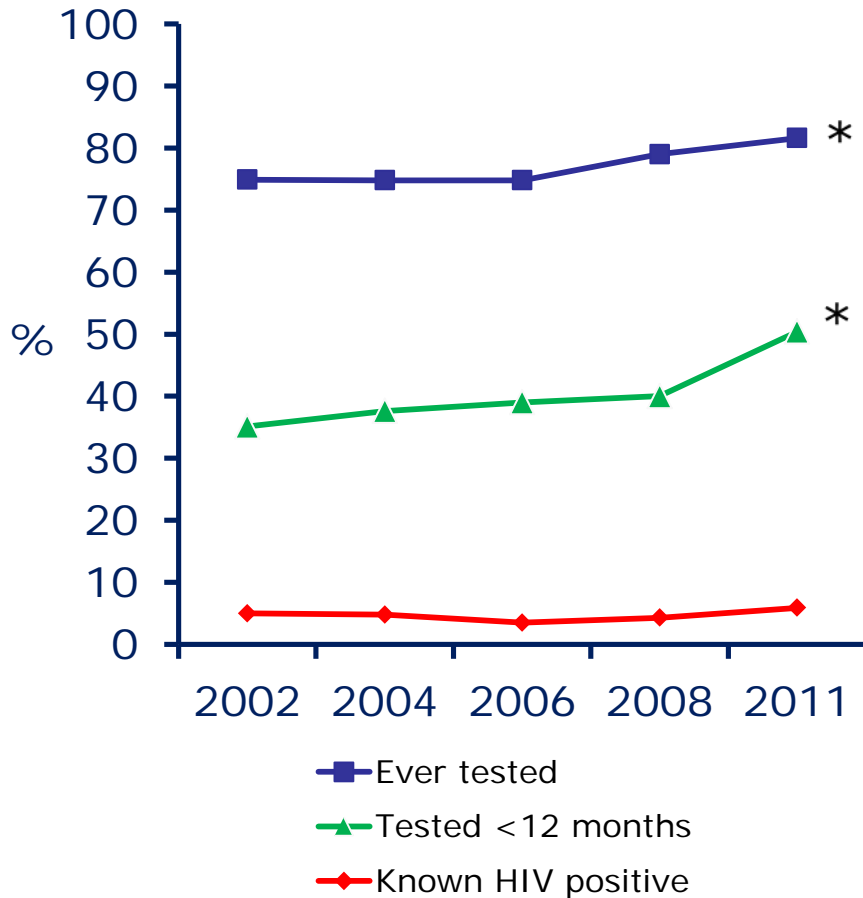
- Overall any UAI with casual partner/s
- ▲ Overall any UAI with current fuckbuddy
- ◆ Overall any UAI with current boyfriend

- Overall any UAI with casual partner/s
- ▲ Overall any UAI with current fuckbuddy
- ◆ Overall any UAI with current boyfriend

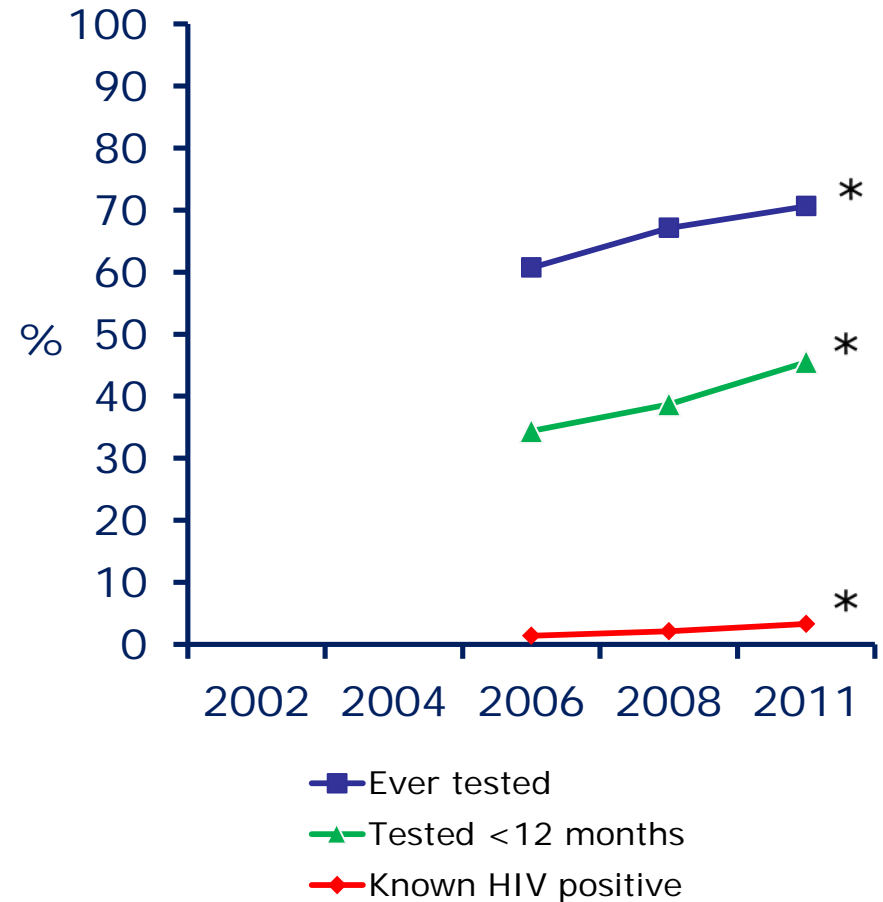
# HIV testing

\* P<0.001

## GAPSS



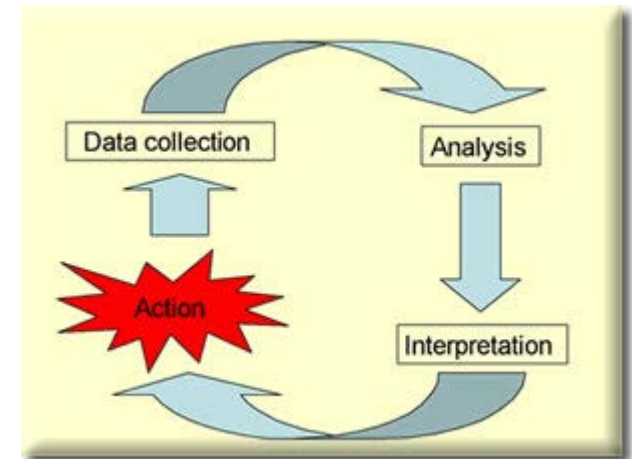
## GOSS



# Summary

- Condom uptake is stable among MSM in NZ
- Alterations to sexual partnering and anal intercourse
- Increased risk of HIV exposure due to these pressures
- HIV testing increasing

# Interpretation



- Looking back...
  - Risk ↑, but not due to condom abandonment
  - ↑ testing coverage may be identifying more infections
- Looking forward...
  - ↑ in transmission risk likely to accrue from increasingly complex sexual partnering and practices
- Others factors e.g. epidemic cycles, viral load, sexual mixing

# Recommendations

- Improve condom promotion and access
- Encourage earlier diagnosis
- Improve frequency and placement of interventions among MSM online
- Encourage and enable STI screening and vaccination among MSM (Hep A, Hep B, HPV)
- Continue behavioural surveillance online as well as offline, as patterns and trends in risk differ

# Acknowledgements

- Ministry of Health funding
- University of Otago Dept of Preventive and Social Medicine PBRF grant
- New Zealand AIDS Foundation Fellowship
- 11,627 responses from MSM
- Venue operators and dating sites

Saxton P, Dickson N, Hughes A. Who is omitted from repeated offline HIV behavioural surveillance among MSM?: Implications for interpreting trends. *AIDS & Behavior* 2013. 17:3133-3144.

Saxton P, Dickson N, Hughes A. Condom use stable and more HIV testing: location-based HIV behavioural surveillance among MSM in Auckland, New Zealand 2002-2011. *Sexually Transmitted Infections* in press.



# The New Zealand Sexual Health Society 35th Annual Conference 2013

## LET'S GET INTO BED TOGETHER



Friday 8 to  
Saturday 9 November 2013

Novotel Rotorua Lakeside

[Home](#) [Speakers](#) [Programme](#) [Te Puawai Tapu Award](#) [Call for Abstracts](#) [Registration](#) [Social Programme](#) [Venue](#) [Accommodation](#)  
[Sponsors/exhibitors](#) [Contact](#)

Welcome to everyone interested in improving their knowledge of Sexual Health in 2013.

This year we are preparing a conference aimed at up-skilling everyone working in the field, to help us meet the challenges of the future. Our theme is Collaboration; thinking about how best we can work together and share our expertise and resources. To do this well we need to have an in depth understanding of the work all groups within the sector do so that we can best support our patients.

Our aim is to provide a conference that motivates us towards providing excellent service. We have looked at the questions posed at the end of the last conference and the issues facing the sector today, and have responded by inviting a range of speakers to focus on breadth of knowledge and the formation of networks within our sexual health community in New Zealand.

The programme for Saturday is designed to appeal to health professionals working in primary practice and includes updates on sexual health in pregnancy, nurse prescribing and a review of the new national STI management guidelines.

Speakers have been invited from a wide range of organisations including:

- Doctors for Sexual Assault Care (DSAC)
- Family planning
- Youth Health Services
- Drug and Addiction Services
- Sex Therapy New Zealand
- New Zealand Sexual Health Society
- Pacific Island Health Services
- Rape Crisis





**NZSHS Conference - Friday 8 and Saturday 9 November 2013, Novotel Rotorua Lakeside**

<b>FRIDAY 8 NOVEMBER 2013</b>		
8.00am	Registration desk opens	
9.00am – 10.15am	Conference Welcome and Opening Room: Batten 2 Chair: Nicky Perkins	
9.00am - 9.20am	Powhiri/welcome <i>Lakes DHB Maori Team</i>	
9.20am - 9.30am	President's welcome <i>Nicky Perkins</i>	
9.30am - 9.45am	Ministry of Health update <i>Manaia King</i>	
9.45am - 10.15am	The epidemiology of bacterial STIs in New Zealand <sup>1</sup> <i>Kerry Sexton</i>	
10.15am - 10.45am	Morning Tea and Exhibition	
10.45am – 12.30pm	Session 1: Epidemiology Room: Batten 2 Chair: Sunita Azariah	
10.45am - 11.15am	STI control in New Zealand – Theory, reality and addressing gaps <sup>2</sup> <i>Jane Morgan</i>	
11.15am - 11.45am	Response to an outbreak of Syphilis in Christchurch <sup>3</sup> <i>Edward Coughlan</i>	
11.45am - 12.15pm	<i>Neisseria gonorrhoeae</i> : A very clear organism? A New Zealand response plan <sup>4</sup> <i>Anne Robertson</i>	
12.15pm - 12.30pm	Panel Discussion	
12.30pm - 1.30pm	Lunch and Exhibition	
1.30pm - 3.00pm	Concurrent Session 2A: Health Promotion Room: Batten 2 Chair: Cathy Parkes	Concurrent Session 2B: Clinical Room: Batten 1 Chair: Heather Young
1.30pm - 1.45pm	Alcohol, young people and sexual health: a new teaching resource <sup>5</sup>	Knowledge of prevention and transmission of human immunodeficiency virus (HIV) and other sexually transmissible

5/11/2013

The committee reserve the right to amend or delete items on the programme without notice.

	<b>Kate Butterfield-Reece</b>	diseases (STDs): Asian-born and New Zealand-born students in Canterbury <sup>10</sup> <b>Bible Lee, R Kirk, K Reid</b>
1.45pm - 2.00pm	A pilot study of respondent driven sampling (RDS) among urban gay men <sup>6</sup> <b>Adrian Ludlam, P J W Saxton, N P Dickson, J Adams</b>	Trends in sexual behaviour, condom use and HIV testing among New Zealand gay and bisexual men recruited offline and online 2002-2011 <sup>11</sup> <b>Peter Saxton, N P Dickson, A J Hughes, A Ludlam</b>
2.00pm - 2.15pm	Has the Get It On! social marketing programme influenced gay and bisexual men's use of condoms for anal sex? <sup>7</sup> <b>Stephen Neville, J Adams</b>	Utilising LEAN thinking in improving services for sexual health patients at a NHS walk in Sexual Health GUM Clinic at Preston, United Kingdom <sup>12</sup> <b>James Meek</b>
2.15pm - 2.30pm	<i>Sexwise</i> a position of power and agency - Ma Te Mārama, Ka Mātau <sup>8</sup> <b>Evelyn Mann, Gareth McMillan</b>	PID and <i>Mycoplasma genitalium</i> – should we be changing our approach? <sup>13</sup> <b>Jeannie Oliphant, S Azariah</b>
2.30pm - 2.45pm	Let's Stay Together – Clinical vs Health Promotion? <sup>9</sup> <b>Jonathan Selu, Kataraina Davis</b>	The back then, now and future of sexual health in New Zealand <sup>14</sup> <b>Janet Say</b>
2.45pm - 3.00pm	Discussion and Q&A	Discussion and Q&A
<b>3.00pm - 3.30pm</b>	<b>Afternoon Tea and Exhibition</b>	
<b>3.30pm - 5.30pm</b>	<b>Session 3: Youth Health</b> <b>Room: Batten 2</b> <b>Chair: Kataraina Davis</b>	
3.30pm - 4.00pm	Weaving threads of hope, faith & love <sup>15</sup> <b>Yvonne Kainuku-Walsh, Siaso Mulipola, Renee Haitoua</b>	
4.00pm - 4.30pm	Enhancing resilience – A youth health lens on sexual health <sup>16</sup> <b>Tania Pinfold</b>	
4.30pm - 5.00pm	I'm King of the World! Understanding how addictive patterns can 'creep' into a young person's life <sup>17</sup> <b>Ben Birks Ang</b>	
5.00pm - 5.30pm	Health Care for Transgendered Young People <sup>18</sup> <b>Kendall Crossen</b>	
<b>5.30pm - 6.30pm</b>	<b>New Zealand Sexual Health Society Annual General Meeting</b> <b>Room: Batten 2</b>	

5/11/2013

The committee reserve the right to amend or delete items on the programme without notice.

## **Trends in sexual behaviour, condom use and HIV testing among New Zealand gay and bisexual men recruited offline and online 2002-2011**

PJW Saxton\*<sup>1,3</sup>, NP Dickson<sup>1</sup>, AJ Hughes<sup>2</sup>, A Ludlam<sup>1,3</sup>

<sup>1</sup> *AIDS Epidemiology Group, Department of Preventive and Social Medicine, University of Otago*

<sup>2</sup> *New Zealand AIDS Foundation*

<sup>3</sup> *School of Population Health, Faculty of Medical and Health Sciences, University of Auckland*

**Aim:** To inform HIV prevention by monitoring modifiable sexual health behaviours among men who have sex with men (MSM) recruited from diverse settings.

**Method:** Periodic surveys of men who have sex with men (MSM) were conducted in gay community settings in Auckland (Big Gay Out, gay bars, sex-on-site venues) 2002-2011 and online on Internet dating sites 2006-2011. Questionnaires were self-completed and anonymous. Responses to core questions regarding sexual behaviours and condom use were compared over time using chi-squared tests for trend and logistic regression analyses.

**Results:** We collected 11,627 responses making this the largest dataset of MSM in the country. Over time, respondents in both offline and online studies became more ethnically diverse and less gay community attached. MSM recruited online also became slightly older, less bisexual identified, more likely have been diagnosed with HIV, and were increasingly likely to check dating profiles at least once a day. After controlling for changes in sample composition, sexual partner numbers declined but engagement in any anal intercourse increased. Condom use with casual, fuckbuddy and boyfriend-type partners remained generally stable over time. Recent testing for HIV rose from 2006.

**Conclusion:** Condom use has not declined among large and diverse samples of MSM in New Zealand since the baseline survey in 2002 which is encouraging. However, at a population level this may be offset by increases in certain types of partnering, and in anal intercourse, particularly among MSM who are online daters. Both universal and targeted public health campaigns to sustain and further raise condom use are required.

The New Zealand Sexual Health Society  
**35TH ANNUAL CONFERENCE 2013**

**8 and 9 November 2013**

Novotel Rotorua Lakeside

## THE MARGARET SPARROW PRIZE

The Margaret Sparrow Prize was created by the New Zealand Sexual Health Society to foster research and excellence in presentation. The prize is awarded for a proffered paper of high standard in clinical or epidemiological research presented orally or by poster at the annual NZSHS Conference.

Peter Saxton

---



---

EDWARD COUGHLAN  
President,  
New Zealand Sexual Health Society

9 November 2013

